



PVC COATED TARPAULIN CATALOGUE



www.dogusanbranda.com.tr

PS FR UV 1100 - 650gsm

GENERAL APPLICATION

(TRUCK COVER)

TR	EN	ÖZELLİKLER / PROPERTIES	TEST METODU / TEST METHOD
Kumaş	Base Fabric	PES	DIN ISO 2076
Kaplama	Knife Coating	PVC	
İplik (Denye)	Yarn	1000D x 1000D	DIN ISO 2060
Dokuma (adet / cm)	Weaving	8x8 / 20x20 inch	DIN ISO 2076
Ağırlığı (g/m ²)	Total Weight (gsm)	650 ± 30 gr	EN ISO 2286-2
Eni (cm)	Width (cm)	150 - 200 - 250 - 300 - 320 cm	
Kopma Mukavemeti (N/5 cm)	Tensile Strength (N/5 cm)	Çözgü / Warp: 2500 Atk / Weft: 2500	ISO 1421/1:2016
Yırtılma Mukavemeti (N)	Tear Strength (N)	Çözgü / Warp: 300 Atk / Weft: 250	EN ISO 4674-1
Yapışma Mukavemeti	Adhesion (N/5 cm)	80N	EN ISO 2411
Işık Haslığı	Light Fastness	6+	ISO 105 B02:1994
Su Geçirmezlik (mmSS)	Water Resistance (mmSS)	Min. 8000	DIN EN 20811
Aşınma Direnci	Abrasion Resistance	Min. 9000 Devir / Cycles	DIN EN 530
Sıcaklık Dayanıklılığı	Heat Resistance	- 40 °C + 70 °C	DIN EN 1876-1
Alev Dayanıklılığı	Flame Reterdancy	B-s2,d0 - UYGUN / PASS	EN ISO 13501-1, DIN 4102-B2, EN ISO 6941: 2003, DIN 75200, BS 7837
Lak (Üst/Alt)	Lacquering (Top/Bottom)	Unlacquered/Unlacquered	

STANDART ÖZELLİKLER

STANDARD PROPERTIES



205-1
GRI
GREY

OPSİYONEL ÖZELLİKLER

OPTIONAL PROPERTIES



DOGUTARP D6100

GENERAL APPLICATION

(TRUCK COVER)

TR	EN	ÖZELLİKLER / PROPERTIES	TEST METODU / TEST METHOD
Kumaş	Base Fabric	PES	DIN ISO 2076
Kaplama	Knife Coating	PVC	
İplik (Denye)	Yarn	1000D x 1000D	DIN ISO 2060
Dokuma (adet / cm)	Weaving	8x8 / 20x20 inch	DIN ISO 2076
Ağırlığı (g/m ²)	Total Weight (gsm)	680 ± 20 gr	EN ISO 2286-2
Eni (cm)	Width (cm)	150 - 200 - 250 - 300 - 320 cm	
Kopma Mukavemeti (N/5 cm)	Tensile Strength (N/5 cm)	Çözgü / Warp: 2500 Atk / Weft: 2500	ISO 1421/1:2016
Yırtılma Mukavemeti (N)	Tear Strength (N)	Çözgü / Warp: 300 Atk / Weft: 250	EN ISO 4674-1
Yapışma Mukavemeti	Adhesion (N/5 cm)	80N	EN ISO 2411
Işık Haslığı	Light Fastness	6+	ISO 105 B02:1994
Su Geçirmezlik (mmSS)	Water Resistance (mmSS)	Min. 8000	DIN EN 20811
Aşınma Direnci	Abrasion Resistance	Min. 9000 Devir / Cycles	DIN EN 530
Sıcaklık Dayanıklılığı	Heat Resistance	- 40 °C + 70 °C	DIN EN 1876-1
Alev Dayanıklılığı	Flame Reterdancy	B-s2,d0 - UYGUN / PASS	EN ISO 13501-1, DIN 4102-B2, EN ISO 6941: 2003, DIN 75200, BS 7837
Lak (Üst/Alt)	Lacquering (Top/Bottom)	Unlacquered/Unlacquered	

STANDART ÖZELLİKLER

STANDARD PROPERTIES



205-1
GRI
GREY

OPSİYONEL ÖZELLİKLER

OPTIONAL PROPERTIES



DOGUTARP D9100

GENERAL APPLICATION

(TRUCK COVER)

TR	EN	ÖZELLİKLER / PROPERTIES	TEST METODU / TEST METHOD
Kumaş	Base Fabric	PES	DIN ISO 2076
Kaplama	Knife Coating	PVC	
İplik (Denye)	Yarn	2000D x 2000D	DIN ISO 2060
Dokuma (adet / cm)	Weaving	8x8 / 20x20 inch	DIN ISO 2076
Ağırlığı (g/m ²)	Total Weight (gsm)	900 ± 20 gr	EN ISO 2286-2
Eni (cm)	Width (cm)	300 cm	
Kopma Mukavemeti (N/5 cm)	Tensile Strength (N/5 cm)	Çözgü / Warp: 4000 Atk / Weft: 4000	ISO 1421/1:2016
Yırtılma Mukavemeti (N)	Tear Strength (N)	Çözgü / Warp: 600 Atk / Weft: 500	EN ISO 4674-1
Yapışma Mukavemeti	Adhesion (N/5 cm)	100N	EN ISO 2411
Işık Haslığı	Light Fastness	6+	ISO 105 B02:1994
Su Geçirmezlik (mmSS)	Water Resistance (mmSS)	Min. 8000	DIN EN 20811
Aşınma Direnci	Abrasion Resistance	Min. 9000 Devir / Cycles	DIN EN 530
Sıcaklık Dayanıklılığı	Heat Resistance	- 40 °C + 70 °C	DIN EN 1876-1
Alev Dayanıklılığı	Flame Reterdancy	B-s2,d0 - UYGUN / PASS	EN ISO 13501-1, DIN 4102-B2, EN ISO 6941: 2003, DIN 75200, BS 7837
Lak (Üst/Alt)	Lacquering (Top/Bottom)	Unlacquered/Unlacquered	

STANDART ÖZELLİKLER

STANDARD PROPERTIES



205-1
GRI
GREY

OPSİYONEL ÖZELLİKLER

OPTIONAL PROPERTIES



DOGUTARP B8100

(BLACKOUT)

TENT AND PERGOLA

TR	EN	ÖZELLİKLER / PROPERTIES	TEST METODU / TEST METHOD
Kumaş	Base Fabric	PES	DIN ISO 2076
Kaplama	Knife Coating	PVC	
İplik (Denye)	Yarn	1000D x 1000D	DIN ISO 2060
Dokuma (adet / cm)	Weaving	8x8 / 20x20 inch	DIN ISO 2076
Ağırlığı (g/m ²)	Total Weight (gsm)	850 ± 30 gr	EN ISO 2286-2
Eni (cm)	Width (cm)	250 - 300 - 320 cm	
Kopma Mukavemeti (N/5 cm)	Tensile Strength (N/5 cm)	Çözü / Warp: 2500 Atk / Weft: 2500	ISO 1421/1:2016
Yırtılma Mukavemeti (N)	Tear Strength (N)	Çözü / Warp: 300 Atk / Weft: 250	EN ISO 4674-1
Yapışma Mukavemeti	Adhesion (N/5 cm)	80N	EN ISO 2411
Işık Haslığı	Light Fastness	6+	ISO 105 B02:1994
Su Geçirmezlik (mmSS)	Water Resistance (mmSS)	Min. 8000	DIN EN 20811
Aşınma Direnci	Abrasion Resistance	Min. 9000 Devir / Cycles	DIN EN 530
Sıcaklık Dayanıklılığı	Heat Resistance	- 40 °C + 70 °C	DIN EN 1876-1
Alev Dayanıklılığı	Flame Retardancy	B-s2,d0 - UYGUN / PASS	EN ISO 13501-1, DIN 4102-B2, EN ISO 6941: 2003, DIN 75200, BS 7837
Lak (Üst/Alt)	Lacquering (Top/Bottom)	Unlacquered/Unlacquered	

STANDART ÖZELLİKLER
STANDARD PROPERTIES



112
BEYAZ
WHITE

OPSİYONEL ÖZELLİKLER
OPTIONAL PROPERTIES



PG FR UV 600 - 440gsm

GENERAL APPLICATION

TENT

TR	EN	ÖZELLİKLER / PROPERTIES	TEST METODU / TEST METHOD
Kumaş	Base Fabric	PES	DIN ISO 2076
Kaplama	Knife Coating	PVC	
Ağırlığı (g/m ²)	Total Weight (gsm)	440 ± 20 gr	EN ISO 2286-2
Eni (cm)	Width (cm)	150 - 200 - 250 - 300 - 320 cm	
Kopma Mukavemeti (N/5 cm)	Tensile Strength (N/5 cm)	Çözü / Warp: 2000 Atk / Weft: 2000	ISO 1421/1:2016
Yırtılma Mukavemeti (N)	Tear Strength (N)	Çözü / Warp: 180 Atk / Weft: 180	EN ISO 4674-1
Işık Haslığı	Light Fastness	6+	ISO 105 B02:1994
Su Geçirmezlik (mmSS)	Water Resistance (mmSS)	Min. 2000	DIN EN 20811
Aşınma Direnci	Abrasion Resistance	Min. 9000 Devir / Cycles	DIN EN 530
Sıcaklık Dayanıklılığı	Heat Resistance	- 40 °C + 70 °C	DIN EN 1876-1
Alev Dayanıklılığı	Flame Retardancy	UYGUN / PASS	EN ISO 6941:2003
Lak (Üst/Alt)	Lacquering (Top/Bottom)	Unlacquered/Unlacquered	

STANDART ÖZELLİKLER
STANDARD PROPERTIES



100-4
BEYAZ
WHITE

OPSİYONEL ÖZELLİKLER
OPTIONAL PROPERTIES



PS FR UV 1100 - 550gsm

GENERAL APPLICATION

(TRUCK COVER)

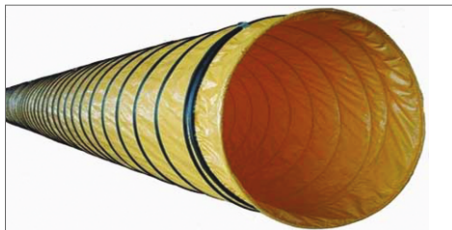
TR	EN	ÖZELLİKLER / PROPERTIES	TEST METODU / TEST METHOD
Kumaş	Base Fabric	PES	DIN ISO 2076
Kaplama	Knife Coating	PVC	
İplik (Denye)	Yarn	1000D x 1000D	DIN ISO 2060
Dokuma (adet / cm)	Weaving	8x8 / 20x20 inch	DIN ISO 2076
Ağırlığı (g/m ²)	Total Weight (gsm)	550 ± 20 gr	EN ISO 2286-2
Eni (cm)	Width (cm)	150 - 200 - 250 - 300 - 320 cm	
Kopma Mukavemeti (N/5 cm)	Tensile Strength (N/5 cm)	Çözü / Warp: 2300 Atk / Weft: 2400	ISO 1421/1:2016
Yırtılma Mukavemeti (N)	Tear Strength (N)	Çözü / Warp: 250 Atk / Weft: 250	EN ISO 4674-1
Işık Haslığı	Light Fastness	6+	ISO 105 B02:1994
Su Geçirmezlik (mmSS)	Water Resistance (mmSS)	Min. 3000	DIN EN 20811
Aşınma Direnci	Abrasion Resistance	Min. 9000 Devir / Cycles	DIN EN 530
Sıcaklık Dayanıklılığı	Heat Resistance	- 40 °C + 70 °C	DIN EN 1876-1
Alev Dayanıklılığı	Flame Retardancy	B-s2,d0 - UYGUN / PASS	EN ISO 13501-1, DIN 4102-B2, EN ISO 6941: 2003, DIN 75200, BS 7837
Lak (Üst/Alt)	Lacquering (Top/Bottom)	Unlacquered/Unlacquered	

STANDART ÖZELLİKLER
STANDARD PROPERTIES



205-1
GRİ
GREY

OPSİYONEL ÖZELLİKLER
OPTIONAL PROPERTIES



DOGUTARP P9000

PRINTABLE SIDE CURTAIN

TR	EN	ÖZELLİKLER / PROPERTIES	TEST METODU / TEST METHOD
Kumaş	Base Fabric	PES	DIN ISO 2076
Kaplama	Knife Coating	PVC	
İplik (Denye)	Yarn (Denier)	2000D x 2000D	DIN ISO 2060
Dokuma	Weaving (cm / inch)	6x6 / 20x20 inch	DIN ISO 2076
Ağırlığı (g/m ²)	Total Weight (gsm)	900 ± 20 gr	EN ISO 2286-2
Eni (cm)	Width (cm)	300 cm	
Kopma Mukavemeti (N/5 cm)	Tensile Strength (N/5 cm)	Çözü / Warp: 4000 Atkı / Weft: 4000	ISO 1421/1:2016
Yırtılma Mukavemeti (N)	Tear Strength (N)	Çözü / Warp: 600 Atkı / Weft: 500	EN ISO 4674-1
Yapışma Mukavemeti	Adhesion (N/5 cm)	100 N	EN ISO 2411
Işık Haslığı	Light Fastness	6+	ISO 105 B02:1994
Su Geçirmezlik (mmSS)	Water Resistance (mmSS)	Min. 8000	DIN EN 20811
Aşınma Direnci	Abrasion Resistance	Min. 9000 Devir / Cycles	DIN EN 530
Sıcaklık Dayanıklılığı	Heat Resistance	- 40 °C + 70 °C	DIN EN 1876-1
Lak (Üst/Alt)	Lacquering (Top/Bottom)	Unlacquered/Unlacquered	

STANDART ÖZELLİKLER
STANDARD PROPERTIES



134-2
BEYAZ
WHITE

OPSİYONEL ÖZELLİKLER
OPTIONAL PROPERTIES



DOGUTARP D6030S

TRUCK COVER

SILVER LACQURED

TR	EN	ÖZELLİKLER / PROPERTIES	TEST METODU / TEST METHOD
Kumaş	Base Fabric	PES	DIN ISO 2076
Kaplama	Knife Coating	PVC	
İplik (Denye)	Yarn (Denier)	1000D x 1000D	DIN ISO 2060
Dokuma	Weaving (cm / inch)	6x6 / 20x20 inch	DIN ISO 2076
Ağırlığı (g/m ²)	Total Weight (gsm)	680 ± 20 gr	EN ISO 2286-2
Eni (cm)	Width (cm)	300 cm	
Kopma Mukavemeti (N/5 cm)	Tensile Strength (N/5 cm)	Çözü / Warp: 2500 Atkı / Weft: 2500	ISO 1421/1:2016
Yırtılma Mukavemeti (N)	Tear Strength (N)	Çözü / Warp: 300 Atkı / Weft: 250	EN ISO 4674-1
Yapışma Mukavemeti	Adhesion (N/5 cm)	80 N	EN ISO 2411
Işık Haslığı	Light Fastness	6+	ISO 105 B02:1994
Su Geçirmezlik (mmSS)	Water Resistance (mmSS)	Min. 8000	DIN EN 20811
Aşınma Direnci	Abrasion Resistance	Min. 9000 Devir / Cycles	DIN EN 530
Sıcaklık Dayanıklılığı	Heat Resistance	- 40 °C + 70 °C	DIN EN 1876-1
Lak (Üst/Alt)	Lacquering (Top/Bottom)	Acrylic/Unlacquered	

STANDART ÖZELLİKLER
STANDARD PROPERTIES



280
GÜMÜŞ
SILVER

OPSİYONEL ÖZELLİKLER
OPTIONAL PROPERTIES



DOGUTARP D9110

TRUCK COVER

TR	EN	ÖZELLİKLER / PROPERTIES	TEST METODU / TEST METHOD
Kumaş	Base Fabric	PES	DIN ISO 2076
Kaplama	Knife Coating	PVC	
İplik (Denye)	Yarn (Denier)	2000D x 2000D	DIN ISO 2060
Dokuma	Weaving (cm / inch)	6x6 / 20x20 inch	DIN ISO 2076
Ağırlığı (g/m ²)	Total Weight (gsm)	900 ± 20 gr	EN ISO 2286-2
Eni (cm)	Width (cm)	300 cm	
Kopma Mukavemeti (N/5 cm)	Tensile Strength (N/5 cm)	Çözü / Warp: 4000 Atkı / Weft: 4000	ISO 1421/1:2016
Yırtılma Mukavemeti (N)	Tear Resistance (N)	Çözü / Warp: 600 Atkı / Weft: 500	EN ISO 4674-1
Yapışma Mukavemeti	Adhesion (N/5 cm)	100N	EN ISO 2411
Işık Haslığı	Light Fastness	6+	ISO 105 B02:1994
Su Geçirmezlik (mmSS)	Water Resistance (mmSS)	Min. 8000	DIN EN 20811
Aşınma Direnci	Abrasion Resistance	Min. 9000 Devir / Cycles	DIN EN 530
Sıcaklık Dayanıklılığı	Heat Resistance	- 40 °C + 70 °C	DIN EN 1876-1
Lak (Üst/Alt)	Lacquering (Top/Bottom)	Acrylic/Unlacquered	
Alev Dayanıklılığı	Flame Retardancy	B-s2,d0 - UYGUN / PASS	EN ISO 13501-1, DIN 4102-B2, EN ISO 6491:2003, DIN 75200, BS 7837

STANDART ÖZELLİKLER
STANDARD PROPERTIES



131/3
BEYAZ
WHITE

OPSİYONEL ÖZELLİKLER
OPTIONAL PROPERTIES



DOGUTARP B8111L

(LINEN BLACKOUT)

TENT AND PERGOLA

TR	EN	ÖZELLİKLER / PROPERTIES	TEST METODU / TEST METHOD
Kumaş	Base Fabric	PES	DIN ISO 2076
Kaplama	Knife Coating	PVC	
İplik (Denye)	Yarn (Denier)	1000D x 1000D	DIN ISO 2060
Dokuma	Weaving (cm / inch)	8x8 / 20x20 inch	DIN ISO 2076
Ağırlığı (g/m ²)	Total Weight (gsm)	850 ± 30 gr	EN ISO 2286-2
Eni (cm)	Width (cm)	300 - 320 cm	
Kopma Mukavemeti (N/5 cm)	Tensile Strength (N/5 cm)	Çözü / Warp: 2500 Atk / Weft: 2500	ISO 1421/1:2016
Yırtılma Mukavemeti (N)	Tear Strength (N)	Çözü / Warp: 300 Atk / Weft: 250	EN ISO 4674-1
Yapışma Mukavemeti	Adhesion (daN/5 cm)	80 N	EN ISO 2411
Işık Haslığı	Light Fastness	6+	ISO 105 B02:1994
Su Geçirmezlik (mmSS)	Water Resistance (mmSS)	Min. 8000	DIN EN 20811
Aşınma Direnci	Abrasion Resistance	Min. 9000 Devir / Cycles	DIN EN 530
Sıcaklık Dayanıklılığı	Heat Resistance	- 40 °C + 70 °C	DIN EN 1876-1
Alev Dayanıklılığı	Flame Reterdancy	B-s2,d0 - UYGUN / PASS	EN ISO 13501-1, DIN 4102-B2, EN ISO 6491:2003, DIN 75200, BS 7837
Lak (Üst/Alt)	Lacquering (Top/Bottom)	Acrylic/Acrylic	

STANDART ÖZELLİKLER STANDARD PROPERTIES



110
KREM
CREAM

OPSİYONEL ÖZELLİKLER OPTIONAL PROPERTIES



DOGUTARP B8100C

(3D BLACKOUT)

TENT AND PERGOLA

TR	EN	ÖZELLİKLER / PROPERTIES	TEST METODU / TEST METHOD
Kumaş	Base Fabric	PES	DIN ISO 2076
Kaplama	Knife Coating	PVC	
İplik (Denye)	Yarn (Denier)	1000D x 1000D	DIN ISO 2060
Dokuma	Weaving (cm / inch)	8x8 / 20x20 inch	DIN ISO 2076
Ağırlığı (g/m ²)	Total Weight (gsm)	850 ± 30 gr	EN ISO 2286-2
Eni (cm)	Width (cm)	300 - 320 cm	
Kopma Mukavemeti (N/5 cm)	Tensile Strength (N/5 cm)	Çözü / Warp: 2500 Atk / Weft: 2500	ISO 1421/1:2016
Yırtılma Mukavemeti (N)	Tear Strength (N)	Çözü / Warp: 300 Atk / Weft: 250	EN ISO 4674-1
Yapışma Mukavemeti	Adhesion (N/5 cm)	80 N	EN ISO 2411
Işık Haslığı	Light Fastness	6+	ISO 105 B02:1994
Su Geçirmezlik (mmSS)	Water Resistance (mmSS)	Min. 8000	DIN EN 20811
Aşınma Direnci	Abrasion Resistance	Min. 9000 Devir / Cycles	DIN EN 530
Sıcaklık Dayanıklılığı	Temperature Resistance	- 40 °C + 70 °C	DIN EN 1876-1
Alev Dayanıklılığı	Flame Reterdancy	B-s2,d0 - UYGUN / PASS	EN ISO 13501-1, DIN 4102-B2, EN ISO 6491:2003, DIN 75200, BS 7837
Lak (Üst/Alt)	Lacquering (Top/Bottom)	Unlacquered/Unlacquered	

STANDART ÖZELLİKLER STANDARD PROPERTIES



110
KREM
CREAM

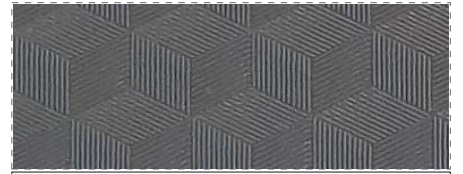
OPSİYONEL ÖZELLİKLER OPTIONAL PROPERTIES



112 BEYAZ / WHITE



110 KREM / CREAM



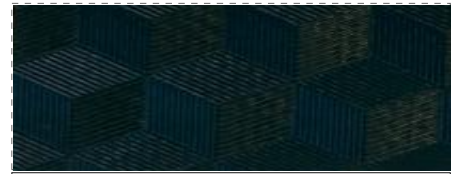
210 GRİ / GREY



237 ANRAŞİT GRİ / A. GREY



507 KIRMIZI / RED



728 YEŞİL / GREEN



751 BORDO / CLARET RED



900 SİYAH / BLACK



DOGUTARP D9000

TRUCK SIDE CURTAIN

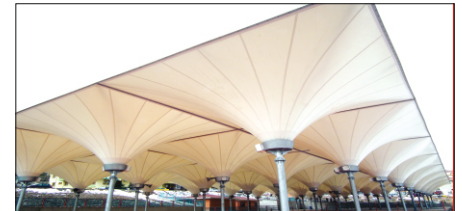
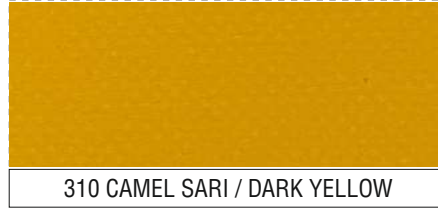
STANDART ÖZELLİKLER STANDARD PROPERTIES



OPSİYONEL ÖZELLİKLER OPTIONAL PROPERTIES



100-6 BEYAZ / WHITE



TR	EN	ÖZELLİKLER / PROPERTIES	TEST METODU / TEST METHOD
Kumaş	Base Fabric	PES	DIN ISO 2076
Kaplama	Knife Coating	PVC	
iplik (Denye)	Yarn (Denier)	2000D x 2000D	DIN ISO 2060
Dokuma	Weaving (cm / inch)	6x6 / 20x20 inch	DIN ISO 2076
Ağırlığı (g/m ²)	Total Weight (gsm)	900 ± 20 gr	EN ISO 2286-2
Eni (cm)	Width (cm)	300 cm	
Kopma Mukavemeti (N/5 cm)	Tensile Strength (N/5 cm)	Çözüğü / Warp: 4000 Atkı / Weft: 4000	ISO 1421/1:2016
Yırtılma Mukavemeti (N)	Tear Strength (N)	Çözüğü / Warp: 600 Atkı / Weft: 500	EN ISO 4674-1
Yapışma Mukavemeti	Adhesion (N/5 cm)	100 N	EN ISO 2411
Işık Haslığı	Light Fastness	6+	ISO 105 B02:1994
Su Geçirmezlik (mmSS)	Water Resistance (mmSS)	Min. 8000	DIN EN 20811
Aşınma Direnci	Abrasion Resistance	Min. 9000 Devir / Cycles	DIN EN 530
Sıcaklık Dayanıklılığı	Heat Resistance	- 40 °C + 70 °C	DIN EN 1876-1
Lak (Üst/Alt)	Lacquering (Top/Bottom)	Unlacquered/Unlacquered	

DOGUTARP D6000

GENERAL APPLICATION

(TRUCK COVER)

STANDART ÖZELLİKLER STANDARD PROPERTIES



OPSİYONEL ÖZELLİKLER OPTIONAL PROPERTIES



100-6 BEYAZ / WHITE

100-6 BEYAZ / WHITE

111-1 KREM / CREAM

131-3 BEYAZ / WHITE

205-1 GRİ / GREY

310 CAMEL SARI / DARK YELLOW

404 ORANJ / ORANGE

507 KIRMIZI / RED

630 P. YEŞİLİ / DARK GREEN

700-1 MAVİ / BLUE



TR	EN	ÖZELLİKLER / PROPERTIES	TEST METODU / TEST METHOD
Kumaş	Base Fabric	PES	DIN ISO 2076
Kaplama	Knife Coating	PVC	
iplik (Denye)	Yarn (Denier)	1000D x 1000D	DIN ISO 2060
Dokuma	Weaving (cm / inch)	8x8 / 20x20 inch	DIN ISO 2076
Ağırlığı (g/m ²)	Total Weight (gsm)	680 ± 20 gr	EN ISO 2286-2
Eni (cm)	Width (cm)	300 cm	
Kopma Mukavemeti (N/5 cm)	Tensile Strength (N/5 cm)	Çözü / Warp: 2500 Atk / Weft: 2500	ISO 1421/1:2016
Yırtılma Mukavemeti (N)	Tear Strength (N)	Çözü / Warp: 300 Atk / Weft: 250	EN ISO 4674-1
Yapışma Mukavemeti	Adhesion (N/5 cm)	80 N	EN ISO 2411
Işık Haslığı	Light Fastness	6+	ISO 105 B02:1994
Su Geçirmezlik (mmSS)	Water Resistance (mmSS)	Min. 8000	DIN EN 20811
Aşınma Direnci	Abrasion Resistance	Min. 9000 Devir / Cycles	DIN EN 530
Sıcaklık Dayanıklılığı	Heat Resistance	- 40 °C + 70 °C	DIN EN 1876-1
Lak (Üst/Alt)	Lacquering (Top/Bottom)	Unlacquered/Unlacquered	

PS UV 1100 - 650gsm

GENERAL APPLICATION

(TRUCK COVER)

STANDART ÖZELLİKLER
STANDARD PROPERTIES



OPSİYONEL ÖZELLİKLER
OPTIONAL PROPERTIES



700-1 MAVİ / BLUE

			
100-4 BEYAZ / WHITE	111-1 KREM / CREAM	125 BEJ (S. Kahve) / BEIGE	205-1 GRİ / GREY
			
240 ANTRASİT / A.GREY	310 CAMEL SARI / DARK YELLOW	404 ORANJ / ORANGE	507 KIRMIZI / RED
			
624 B. YEŞİLİ / LIGHT GREEN	630 P. YEŞİLİ / DARK GREEN	700 -1 MAVİ / BLUE	710 A. MAVİ / LIGHT BLUE
			
713 BORDO / CLARET RED	731 LACİVERT / DARK BLUE	740 TURKUAZ / TURKUISE	844 KAHVE / BROWN
			
900 SİYAH / BLACK	900 MAT SİYAH / MATT BLACK	1015 HAKİ / KHAKI	

TR	EN	ÖZELLİKLER / PROPERTIES	TEST METODU / TEST METHOD
Kumaş	Base Fabric	PES	DIN ISO 2076
Kaplama	Knife Coating	PVC	
İplik (Denye)	Yarn (Denier)	1000D x 1000D	DIN ISO 2060
Dokuma	Weaving (cm / inch)	8x8 cm / 20x20 inch	DIN ISO 2076
Ağırlığı (g/m ²)	Total Weight (gsm)	650 ± 20 gr	EN ISO 2286-2
Eni (cm)	Width (cm)	150 - 200 - 250 - 280 - 300 - 320 cm	
Kopma Mukavemeti (N/5 cm)	Tensile Strength (N/5 cm)	Çözü / Warp: 2500 Atk / Weft: 2500	ISO 1421/1:2016
Yırtılma Mukavemeti (N)	Tear Strength (N)	Çözü / Warp: 300 Atk / Weft: 250	EN ISO 4674-1
Işık Haslığı	Light Fastness	6+	ISO 105 B02:1994
Su Geçirmezlik (mmSS)	Water Resistance (mmSS)	Min. 8000	DIN EN 20811
Aşınma Direnci	Abrasion Resistance	Min. 9000 Devir / Cycles	DIN EN 530
Sıcaklık Dayanıklılığı	Heat Resistance	- 40°C + 70°C	DIN EN 1876-1
Lak (Üst/Alt)	Lacquering (Top/Bottom)	Unlacquered/Unlacquered	

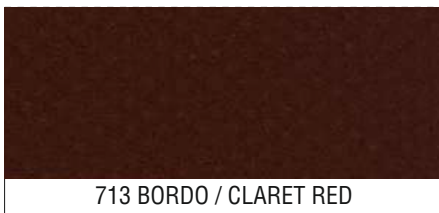
STANDART ÖZELLİKLER
STANDARD PROPERTIES



OPSİYONEL ÖZELLİKLER
OPTIONAL PROPERTIES



205-1 GRİ / GREY



TR	EN	ÖZELLİKLER / PROPERTIES	TEST METODU / TEST METHOD
Kumaş	Base Fabric	PES	DIN ISO 2076
Kaplama	Knife Coating	PVC	
İplik (Denye)	Yarn (Denier)	1000D x 1000D	DIN ISO 2060
Dokuma	Weaving (cm / inch)	8x8	DIN ISO 2076
Ağırlığı (g/m ²)	Total Weight (gsm)	550 ± 20 gr	EN ISO 2286-2
Eni (cm)	Width (cm)	300 cm - 320 cm	
Kopma Mukavemeti (N/5 cm)	Tensile Strength (N/5 cm)	Çözüğü / Warp: 2000 Atk / Weft: 2000	ISO 1421/1:2016
Yırtılma Mukavemeti (N)	Tear Strength (N)	Çözüğü / Warp: 180 Atk / Weft: 180	EN ISO 4674-1
Işık Haslığı	Light Fastness	6+	ISO 105 B02:1994
Su Geçirmezlik (mmSS)	Water Resistance (mmSS)	Min. 2000	DIN EN 20811
Aşınma Direnci	Abrasion Resistance	Min. 9000 Devir / Cycles	DIN EN 530
Sıcaklık Dayanıklılığı	Heat Resistance	- 40°C + 70°C	DIN EN 1876-1
Lak (Üst/Alt)	Lacquering (Top/Bottom)	Unlacquered/Unlacquered	

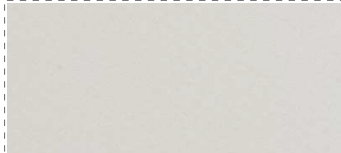
STANDART ÖZELLİKLER
STANDARD PROPERTIES



OPSİYONEL ÖZELLİKLER
OPTIONAL PROPERTIES



710 A. MAVİ / LIGHT BLUE



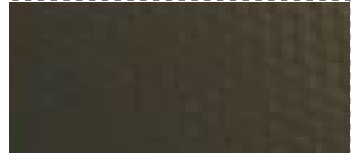
100-4 BEYAZ / WHITE



111-1 KREM / CREAM



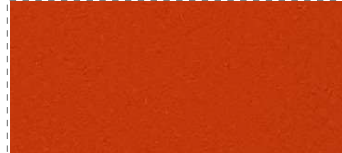
205-1 GRİ / GREY



240 ANTRASİT / A. GREY



310 CAMEL SARI / DARK YELLOW



404 ORANJ / ORANGE



507 KIRMIZI / RED



630 P. YEŞİLİ / DARK GREEN



700-1 MAVİ / BLUE



710 A. MAVİ / LIGHT BLUE



713 BORDO / CLARET RED



900 SİYAH / BLACK



TR	EN	ÖZELLİKLER / PROPERTIES	TEST METODU / TEST METHOD
Kumaş	Base Fabric	PES	DIN ISO 2076
Kaplama	Knife Coating	PVC	
Ağırlığı (g/m ²)	Total Weight (gsm)	440 ± 20 gr	EN ISO 2286-2
Eni (cm)	Width (cm)	300 cm - 320 cm	
Kopma Mukavemeti (N/5 cm)	Tensile Strength (N/5 cm)	Çözüğü / Warp: 2000 Atkı / Weft: 2000	ISO 1421/1:2016
Yırtılma Mukavemeti (N)	Tear Strength (N)	Çözüğü / Warp: 180 Atkı / Weft: 180	EN ISO 4674-1
Işık Haslığı	Light Fastness	6+	ISO 105 B02:1994
Su Geçirmezlik (mmSS)	Water Resistance (mmSS)	Min. 2000	DIN EN 20811
Aşınma Direnci	Abrasion Resistance	Min. 9000 Devir / Cycles	DIN EN 530
Sıcaklık Dayanıklılığı	Heat Resistance	- 40°C + 70°C	DIN EN 1876-1
Lak (Üst/Alt)	Lacquering (Top/Bottom)	Unlacquered/Unlacquered	

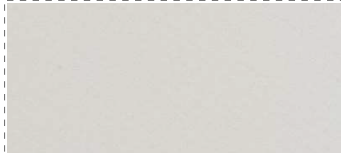
STANDART ÖZELLİKLER
STANDARD PROPERTIES



OPSİYONEL ÖZELLİKLER
OPTIONAL PROPERTIES



507 KIRMIZI / RED



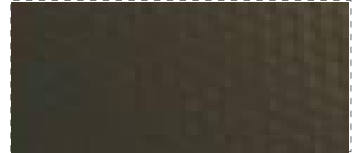
100-4 BEYAZ / WHITE



111-1 KREM / CREAM



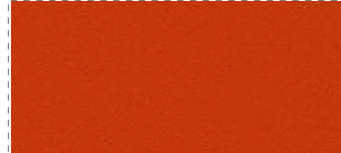
205-1 GRİ / GREY



240 ANTRASİT / A. GREY



310 CAMEL SARI / DARK YELLOW



404 ORANJ / ORANGE



507 KIRMIZI / RED



624 B.YEŞİL / LIGHT GREEN



630 P.YEŞİLİ / DARK GREEN



700-1 MAVİ / BLUE



710 A. MAVİ / LIGHT BLUE



713 BORDO / CLARET RED



740 TURKUAZ / TURKUISE



900 SİYAH / BLACK



TR	EN	ÖZELLİKLER / PROPERTIES	TEST METODU / TEST METHOD
Kumaş	Base Fabric	PES	DIN ISO 2076
Kaplama	Knife Coating	PVC	
İplik (Denye)	Yarn (Denier)	450D x 450D	DIN ISO 2060
Dokuma (adet/cm)	Weaving / (piece / inch)	16x10 cm / 40x25 inch	DIN ISO 2076
Ağırlığı (g/m ²)	Total Weight (gsm)	400 ± 20 gr	EN ISO 2286-2
Eni (cm)	Width (cm)	140 - 280 cm	
Işık Haslığı	Light Fastness	6+	ISO 105 B02:1994
Su Geçirmezlik (mmSS)	Water Resistance (mmSS)	Min. 2000	DIN EN 20811
Aşınma Direnci	Abrasion Resistance	Min. 9000 Devir / Cycles	DIN EN 530
Sıcaklık Dayanıklılığı	Heat Resistance	- 40 °C + 70 °C	DIN EN 1876-1
Lak (Üst/Alt)	Lacquering (Top/Bottom)	Unlacquered/Unlacquered	

DOGUSAN

TECHNICAL TEXTILE

DOGUTEX
DOGUTARP
BIOTARP



ISO 9001
ISO 14001
ISO 22301
ISO 27001
ISO 45001



www.dogusanbranda.com.tr

